

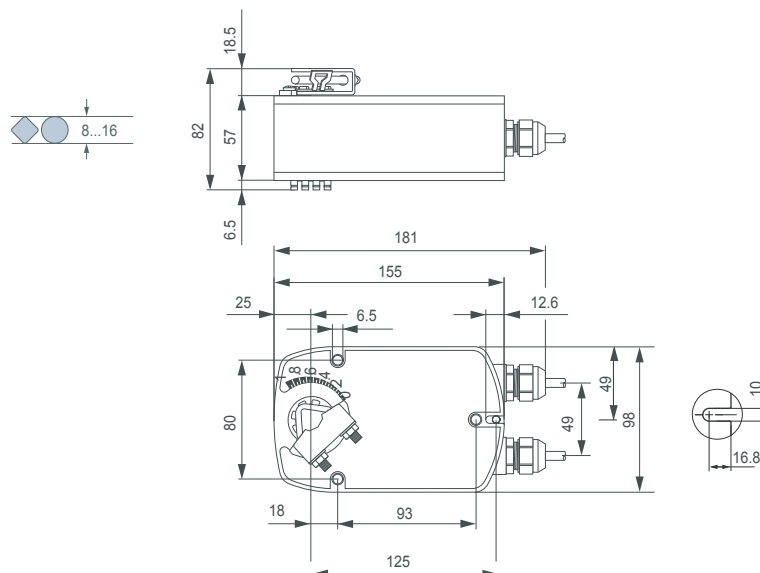
- For operation of air control dampers that perform safety function
- Torque: 4Nm
- Nominal voltage: AC/DC 24V
- Control: Open/Close
- Integrated auxiliary switch (LF24-S)



## Technical data

<b>Electrical data</b>	Nominal voltage	AC 24V 50/60Hz, DC 24V
	Nominal voltage range	AC 19.2...28.8V / DC 21.6...28.8V
	Power consumption	5W @ nominal torque / 2.5W @ holding
	For transformer sizing	7VA
	Auxiliary switch (-S)	1 SPDT, 1mA...3(0.5)A, AC 250V, adjustable
	Connecting cable -motor -auxiliary switch (-S)	Cable 1m, 2x0.75mm <sup>2</sup> Cable 1m, 3x0.75mm <sup>2</sup>
<b>Functional data</b>	Torque	4Nm @ nominal voltage
	Direction of rotation	Selectable by mounting L/R
	Angle of rotation	Max. 95°, 37...100% adjustable by mechanical stops
	Running time -motor -spring return	40...75s 20s @ -20...+50°C / max. 60s @ -30°C
	Sound power level -motor -spring return	Max. 50dB(A) Max. 62dB(A)
	Position indicator	Mechanical
<b>Working conditions</b>	Protection class	III (safety extra-low voltage)
	Degree of protection	IP54
	EMC	CE according to 2004/108/EC
	Ambient temp. Non-operation temp.	-30...+50°C -40...+80°C
	Humidity	5...95% RH, non-condensing
	Maintenance	Maintenance-free
<b>Dimensions / weight</b>	Dimensions (LxWxH)	181x98x82mm
	Shaft length Clamp up Clamp down	Min. 84mm Min. 20mm
	Shaft	⌀ 8...16mm
	Weight	1.4kg

## Dimensions [mm]



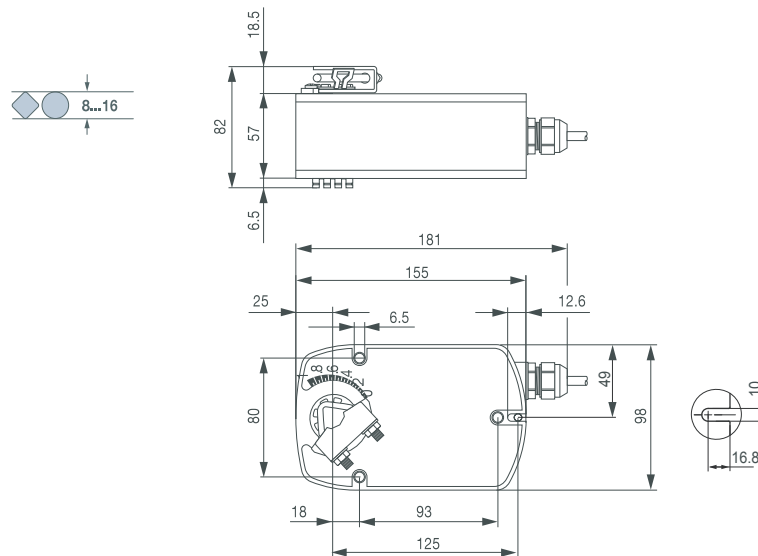
- For operation of air control dampers that perform safety function
- Torque: 4Nm
- Nominal voltage: AC/DC 24V
- Control: 3-point



## Technical data

<b>Electrical data</b>	Nominal voltage	AC 24V 50/60Hz, DC 24V
	Nominal voltage range	AC 19.2...28.8V / DC 21.6...28.8V
	Power consumption	2.5W @ nominal torque / 1W @ holding
	For transformer sizing	5VA
<b>Functional data</b>	Connecting cable	Cable 1m, 4x0.75mm <sup>2</sup>
	Torque	4Nm @ nominal voltage
	Direction of rotation	Selectable by mounting L/R
	Angle of rotation	Max. 95°, 37...100% adjustable by mechanical stops
	Running time	-motor 150s -spring return 20s @ -20...+50°C / max. 60s @ -30°C
	Sound power level	-motor Max. 30dB(A) -spring return Max. 62dB(A)
	Position indicator	Mechanical
<b>Working conditions</b>	Protection class	III (safety extra-low voltage)
	Degree of protection	IP54
	EMC	CE according to 2004/108/EC
	Ambient temp.	-30...+50°C
	Non-operation temp.	-40...+80°C
	Humidity	5...95% RH, non-condensing
	Maintenance	Maintenance-free
<b>Dimensions / weight</b>	Dimensions (LxWxH)	181x98x82mm
	Shaft length	Clamp up Min. 84mm Clamp down Min. 20mm
	Shaft	8...16mm
	Weight	1.4kg

## Dimensions [mm]



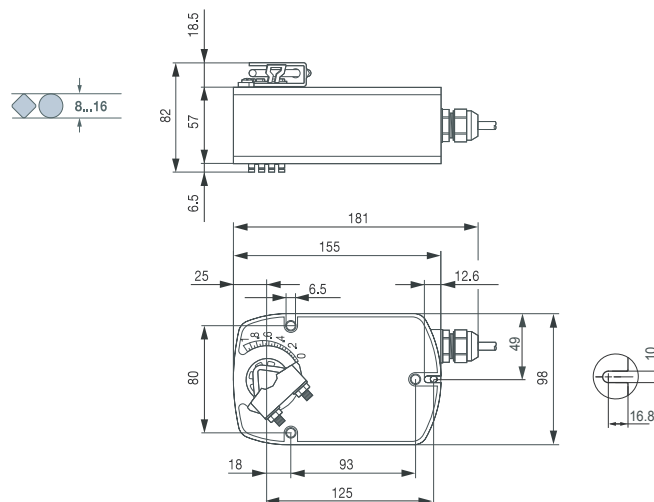
- For operation of air control dampers that perform safety function
- Torque: 4Nm
- Nominal voltage: AC/DC 24V
- Control signal: DC (0)2...10V
- Position feedback: DC 2...10V



## Technical data

<b>Electrical data</b>	Nominal voltage	AC 24V 50/60Hz, DC 24V	
	Nominal voltage range	AC 19.2...28.8V / DC 21.6...28.8V	
	Power consumption	2.5W @ nominal torque / 1W @ holding	
	For transformer sizing	5VA	
	Connecting cable	Cable 1m, 4x0.75mm <sup>2</sup>	
<b>Functional data</b>	Torque	4Nm @ nominal voltage	
	Control signal Y	DC (0)2...10V @ input impedance 100kΩ	
	Position feedback signal U	DC 2...10V @ max. 0.7mA	
	Direction of rotation	Selectable by L/R switch Selectable by L/R mounting	
	Angle of rotation	Max. 95°, 37...100% adjustable by mechanical stops	
	Running time	-motor 150s -spring return 20s @ -20...+50°C / max. 60s @ -30°C	
	Sound power level	-motor Max. 30dB(A) -spring return Max. 62dB(A)	
	Position indicator	Mechanical	
	<b>Working conditions</b>	Protection class	III (safety extra-low voltage)
		Degree of protection	IP54
EMC		CE according to 2004/108/EC	
Mode of operation		Type 1.AA (EN 60730-1)	
Ambient temp.		-30...+50°C	
Non-operation temp.		-40...+80°C	
Humidity		5...95% RH, non-condensing	
Maintenance		Maintenance-free	
<b>Dimensions / weight</b>		Dimensions (LxWxH)	181x98x82mm
		Shaft length	Clamp up Min. 84mm Clamp down Min. 20mm
	Shaft	8...16mm	
	Weight	1.4kg	

## Dimensions [mm]



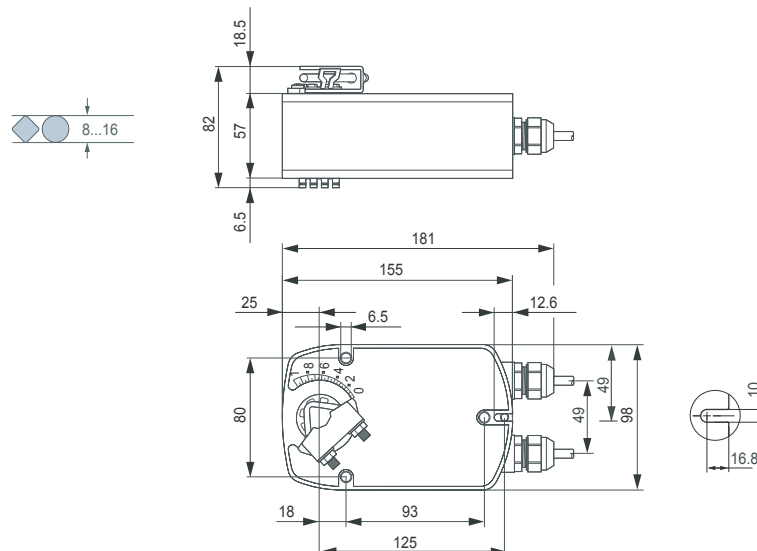
- For operation of air control dampers that perform safety function
- Torque: 4Nm
- Nominal voltage: AC 230V
- Control: Open/Close
- Integrated auxiliary switch (LF230-S)



## Technical data

<b>Electrical data</b>	Nominal voltage	AC 230V 50/60Hz	
	Nominal voltage range	AC 198...264V	
	Power consumption	5W @ nominal torque / 3W @ holding	
	For transformer sizing	7VA	
	Auxiliary switch (-S)	1 SPDT, 1mA...3(0.5)A, AC 250V, adjustable	
	Connecting cable -motor -auxiliary switch (-S)	Cable 1m, 2x0.75mm <sup>2</sup> Cable 1m, 3x0.75mm <sup>2</sup>	
<b>Functional data</b>	Torque	4Nm @ nominal voltage	
	Direction of rotation	Selectable by mounting L/R	
	Angle of rotation	Max. 95°, 37...100% adjustable by mechanical stops	
	Running time -motor -spring return	40...75s 20s @ -20...+50°C / max. 60s @ -30°C	
	Sound power level -motor -spring return	Max. 50dB(A) Max. 62dB(A)	
	Position indicator	Mechanical	
<b>Working conditions</b>	Protection class	II (Totally insulated)	
	Degree of protection	IP54	
	EMC	CE according to 2004/108/EC	
	Low voltage directive	CE according to 2006/95/EC	
	Ambient temp. Non-operation temp.	-30...+50°C -40...+80°C	
	Humidity	5...95% RH, non-condensing	
<b>Dimensions / weight</b>	Maintenance	Maintenance-free	
	Dimensions (LxWxH)	181x98x82mm	
	Shaft length	Clamp up Clamp down	Min. 84mm Min. 20mm
	Shaft		⌀ 8...16mm
	Weight		1.55kg

## Dimensions [mm]

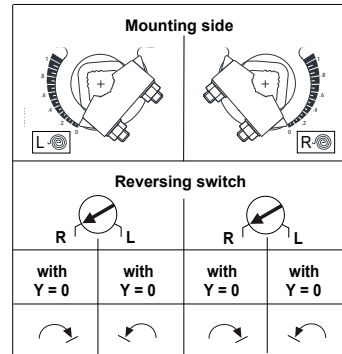
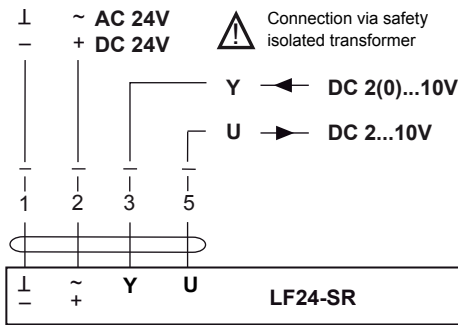


**Wiring diagrams**

**Modulating control**

**Notes:**

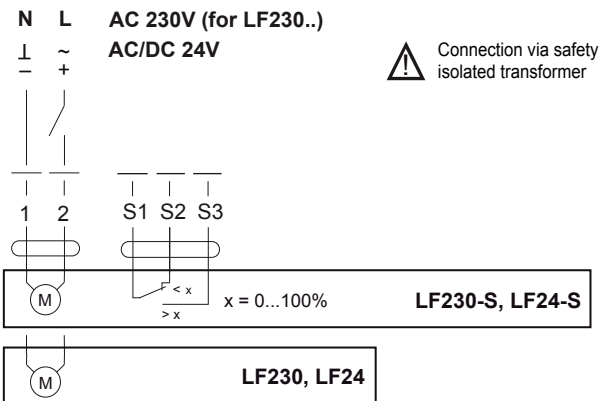
- Connection via safety isolating transformer.
- Parallel connection of several actuators is possible.
- Power consumption must be observed.



**Open/Close control**

**Notes:**

- Parallel connection of several actuators is possible.
- Power consumption must be observed.



**3-Point control**

**Notes:**

- Connection via safety isolating transformer.
- Parallel connection of several actuators is possible.
- Power consumption must be observed.

